



UUFC WORLD

Unitarian Universalist Fellowship of Clemson

230 Pendleton Road, Clemson, SC 29631

April 2009

Volume 31 Issue 4



APRIL - SUNDAY SERVICES

Morning Reflection - 10 a.m. Social Time-10:30 a.m. Services - 11:00 a.m.

April 5

Reflection: Buddhist Meditation
Jeanne Malmgren

Welcoming Congregation: Two Years Later
Teen Service

April 12

(No Morning Reflection, but see this page about
our Easter Breakfast!)

Easter Service
Intergenerational
Reverend Cynthia Prescott

April 19

Reflection: The Threat of Ignorance
Jim Rodgers

All Rocks go to Heaven - Earth Day
& Celebrating 2nd anniversary of Green Sanctuary
Reverend Cynthia Prescott

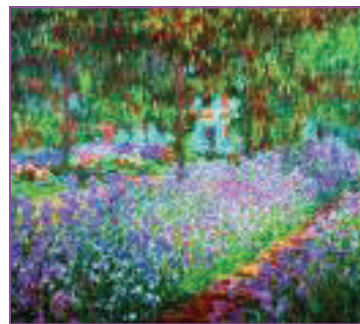
April 26

Reflection: TBA

What Makes us Human?
(Holocaust Remembrance Day)
Reverend Cynthia Prescott

Easter Breakfast

Join us for our annual Easter Breakfast 9:30 a.m.
Sunday, April 12. There will be no 10 a.m. reflection
service. This is a potluck where you provide egg dish,
meat/casserole, breakfast breads, fruit, juice or what-
ever. Please sign up on the poster in the atrium let-
ting us know how many people will be in your party
and what you are bringing. If you can't make it to
UUFC to sign up, you can contact Anita Stutzman
(885-1442 or arstutzman@bellsouth.net). Volunteers
are needed to set up, help things run smoothly, and
clean up.



(Ed. Note: In honor of April, Easter and spring,.....Here's a
reproduction of one of Claude Monet's Garden of Irises paint-
ings, taken from Internet Google Images. Numerous sites are
out there with "Master Artists" reproductions.)

HIGHLIGHTS IN THIS ISSUE

Page 1: Look and see here!

Page 2: For Thinking Out Loud

Page 3: The View From Here

Page 4: DRE's Corner

Page 5: Fundraising & Fun Raising

Page 6: Green Sanctuary

Page 7: More Green Sanctuary & Important Outreach

Page 8: Board of Trustees' March Report

Page 9: Holidays & Hospitality Report

FOR THINKING OUT LOUD

Thinking April

Reverend Cynthia Prescott

Minister's Discretionary Fund. Heartfelt thanks to the folks who made a special pledge to augment the Minister's Discretionary Fund during the 2008 winter holiday season. Most of the requests for assistance we received were for help with food. Because of an infusion of donated BiLo cards in December, the Minister's Discretionary Fund did not become "overdrawn."

For two years the fund has been sustained entirely by profits from the monthly Trading Post. However, Trading Post profits have declined to the point where they are no longer sufficient to keep an average balance in the Minister's Discretionary Fund of at least \$500. Through 2009, the fund will continue to be replenished by Trading Post profits, but the further expectation of increased need in today's tight economy suggests a boost is in order.

To maintain a steady supply throughout the year, we also will be purchasing BiLo cards through the Minister's Discretionary Fund, rather than relying solely on donated cards. (A special Fourth Sunday Collection in November will again make sure there are enough extra cards to cover the holidays.)

You can make a donation directly to the Minister's Discretionary Fund by writing a check with those three words on the memo line. (Make the check itself out to UUFC.) Doing this will ensure your donation is credited properly in a quarterly statement. Treasurer Christine Grewcock encourages you to follow this procedure instead of donating BiLo cards and requesting a letter for your tax records; it's much easier from the bookkeeping standpoint. No donation to the Minister's Discretionary Fund can be earmarked for a specific purpose or recipient.

The Minister's Discretionary Fund got its name because the minister (me) often learns of situations where someone who may or may not belong to the fellowship community is in need of financial assistance. Yes, most requests do come from the "outside", but the fund also is available to members and friends within the congregation – a good thing to remember in these tough times. Please don't hesitate to get in touch with me if you are in need of help. Your request will be held in the strictest confidence.

Pastoral Care. Based on an extended conversation period in the March 15 service on pastoral care *Strong in the Broken Places*, I've come up with a Wish List for strengthening the fellowship's Caring Network. Please contact me at 654-8832 or cynthia.prescott@yahoo.com if you can help out in one of the following ways:

- Two people to coordinate an update of the volunteer list that the Caring Network that I use to organize assistance when someone is ill or otherwise in need.
- Up to three people (rotating schedule) who attend Morning Reflection and/or the 11:00 service regularly and will help keep the Caring Network and I notified of Celebrations and Concerns that need our attention.
- One person who is able to work with me on developing a monthly newsletter column dedicated to fellowship community "milestones."

Two people with a background in social work or a related field willing to work with me on developing a Pastoral Associates program to debut in the fall of 2009.

I look forward to hearing from you.

Blessings,

Cynthia

THE VIEW FROM HERE

Martha Alexander, UUFC Board President

“Enter in Silence,” say the signs on the doors to our sanctuary. Someone brought them to my attention recently and I began to think about what it could mean for us. Almost nobody is silent as we enter on Sunday mornings. As for me, there always seems to be so much church business to carry on. However, I keep thinking about other churches I have visited and the meditative spirit I have felt upon entering. An usher was at the doors to the sanctuary handing out bulletins and often I was escorted to a pew. There may have been smiles or a nod of recognition, but no talking, and usually organ music playing.

“For millennia spiritual seekers, religious teachers, and philosophers have recognized the value of solitude and contemplation and have made them an integral part of their lives. Buddhism, Christianity, Shamanism, Judaism, Hinduism, Sufism, Taoism and Islam all have at their foundations a history of seeking solitude and silence as a path to the Source” (LeClaire, Anne D., *Listening Below the Noise*). “A silent mind, freed from the onslaught of thoughts and thought patterns, is both a goal and an important step in spiritual development. Such ‘inner silence’ is not about the absence of sound; instead, it is understood to bring one in contact with the divine, the ultimate reality, or one’s own true self. Many religious traditions imply the importance of being quiet and still in mind and spirit for transformative and integral spiritual growth to occur” (“Silence,” Wikipedia).

Rev. Christine Robinson, writing about a religious experience during a ride at Disney World and comparing her ministry, said “... the biggest thrills I can offer are singing, laughter, and the sound of sheer silence” (“Imagineers of Soul,” *UU World Spring '09*). Can we offer silence prior to the eleven o’clock service?

On most Sundays 11 AM comes and goes and folks are still coming in talking and standing in the aisles. In other UU congregations I have heard requests for quietness as a time for centering. I would like to hear from you. What do you think about entering in silence? If you think this is a good idea, I am willing to try. For my part I will not conduct church business at this time. Instead I will request that if you were not able to speak to me in the hall and have pressing church business you need to communicate, you give it to me in a note. Another question: Would you like music to begin at 10:45 AM? I would not ask our musicians to perform, but would play recorded music of the soft meditative variety. On Sunday, May 4th, at our Congregational Meeting, let me know what you think.

Enter in Silence Yes No

Enter in Silence with Soft Music Yes No

UUFC WORLD is published monthly by the Unitarian Universalist Fellowship of Clemson. Please send your submissions to heidisong@nctv.com or visit us at 230 Pendleton Road, Clemson, SC 29631. The deadline for submissions is the 20th of each month for the following month’s edition. Visit our web page at www.uufc.org. Our Webmaster is Steve Bynum.

We welcome new ideas, opinion letters, poetry, verse, inspirational quotations....even UU-appropriate cartoons or jokes. And please check UUFC Midweek News emails....for additional timely updates on classes, programs, outreach information, and sometimes news of members.

The DRE's Corner: Meg MacArthur
News from Religious Education

Last Easter, instead of hiding Easter eggs, we hid canned goods and donated the cans the children found, to Clemson Community Care. That worked well so we have decided to do it again. There is a box in the Social Room at the Fellowship where you can deposit canned goods for the Easter "can" hunt. Easter will be April 12 so there's still some time for us to collect canned goods.

On another note, it bothers me when people laugh at things the children say during Together Time on Sundays. The children often say cute things. And I don't think the adults are laughing at them. They are probably just surprised by what the child has said. People often laugh when they are surprised. But the children might think they are being laughed at. Then what are we teaching them? If they talk, someone will laugh so they'd better not talk. Is that what we want our children to learn?

Please, remember that Together Time is worship for the children. If they are serious, treat what they say seriously.

Thank you for supporting Religious Education at the Fellowship.

Meg MacArthur, DRE

**"LEARNING IS NOT A PRODUCT OF
SCHOOLING, BUT THE LIFELONG
ATTEMPT TO ACQUIRE IT."**

Albert Einstein, Physicist & Nobel Laureate

ADULT RE: Book discussion of "The Axemaker's Gift", led by Cecil Huey, Sunday mornings, 9:00 a.m. Back Adult RE Classroom, already in progress since mid-March.

And.....looking forward to:

Awakening the Dreamer, Changing the Dream
A free symposium exploring a new global vision for environmental sustainability, spiritual growth and social justice. Sunday, May 24, from 1:00 pm to 4:00 pm in the fellowship sanctuary. Presented in partnership with the Pachamama Alliance. Hosted by UUFC and Peace Congregation UCC. For background information and further details, go to www.AwakeningTheDreamer.org or www.pachamama.org.

April Rain Song

**Let the rain kiss you.
Let the rain beat upon your head with
silver liquid drops.
Let the rain sing you a lullaby.
The rain makes still pools on the sidewalk.
The rain makes running pools in the
gutter.
The rain plays a little sleep song on our
roof at night--
And I love the rain.**

Langston Hughes, 1902-1967

Fundraising

The Fellowship yard sale originally scheduled for March 28th, has been postponed due to the much needed rain, and is now scheduled for Saturday, April 4, 2009!

Submitted by Holley Ulbrich

And More Fun Raising!

April 7th, 5:30 pm, Founders House

For all UU women, here's a call to joust. We're going to have a *Fictionary party. Please bring a salad, ever so hearty. And a beverage of your choice To moisten your voice, Though there will be coffee and tea, And plenty of laughter and camaraderie. Please RSVP to me, Nancy Oppenheimer at oppenheimerart@bellsouth.net.

*Fictionary - A turn consists of one player picking a word from the dictionary and each other player composing a fake definition. A round is completed when each player has selected a word to be guessed. Players earn points (1) by guessing the correct definition of a word, (2) by composing a fake definition that other players guess is the correct one, and (3) as Picker, selecting a genuine word that no players vote for. The winner is the player who has earned the most points after a pre-determined number of rounds.

Submitted by Nancy Oppenheimer

Looking forward to May: Artists Tour!

May 2nd and 3rd is the Artists Open Studio tour in Oconee and Pickens county. Our member Nancy Oppenheimer will be one of the artists! A reception at the Clemson Arts Center will be held April 24th, 6-9 pm, and the tour will take place Saturday May 2nd, 10-6pm and Sunday, May 3rd 12-5pm. All the artists will be demonstrating and selling their work from their open studios.

Interested in forming a UU ladies hiking group? If so, please contact Karel Keel or Nancy Oppenheimer-Smolen.

RESTAURANT DINNER GROUP

Wednesday, April 15, at 6:00 p.m.

Friends Café, College Avenue, Clemson

On Wednesday, April 15th, at 6:00 pm, let's meet at Friends Café in Clemson! Linda Law has raved about it, and many others of us have enjoyed this dining experience. A few of us have chatted with owner George Shojaee, who emigrated to our area from Iran 10 years ago.

Linda says, "It's a wonderful place right on College Avenue in the same building as the Blue Heron. The owner is very interested in raising the profile of the place. It's not simply a college student hang-out, even though there's a hookah pipe set-up out front! It's a great place for lunch or dinner, and has a delicious Sunday buffet, something all of us at UUFC might be interested in. Mr. Shojaee wants more adult patrons! The food is excellent. Try the chicken kebobs, the grape leaves, the grilled veggies... and more. It would be nice also, for the Lunch Bunch to have an alternative option now and then, and Friends would be a good choice."

"Desert Island Discs"* Club anyone?

(*Name taken from popular British radio program.)
Calling Music lovers all, (men & women, including teens): Interested in expanding your musical horizons, or just *groovin'* (word circa 1967) by sharing **favorite music of any kind** (doesn't have to be whole discs! ...just individual songs/pieces/works)? And taking turns each meeting (once monthly) being the "host" with your CD player and your own commentary (*high-, mid-, low- or no- brow*) regarding four to six (*per session*) of your favorites?!

Contact Heidi Campbell

Green Sanctuary

In Summer 2008, the Unitarian Universalist Assembly selected "Ethical Eating: Food and Environmental Justice" for congregational study and action. Just in time for spring, the March 22nd service was devoted to the topic of ethical eating. Co-sponsored by Green Sanctuary and the Outreach Committee, the service was followed by a "food for thought" session where we shared ideas about "next steps" as a congregation for supporting the theme of ethical eating.

As we recognized during and after the service, the questions (and answers) about how to eat ethically are quite complex. For example, figuring out how to reduce our ecological footprint through our diet presents some dilemmas. On one hand, a 2003 University of Iowa study found that most produce travels about 1,500 miles before it arrives in Iowa homes; the same numbers apply to food for our own dinner plates here in South Carolina. Still other studies indicate that changing our diets would have an even greater impact on our planet. Hence, the recent "Meatless Mondays" movement that encourages people to give up meat for one day a week.

Locally, we continue to debate these issues, recognizing that the benefits of eating locally extend beyond issues of sustainability. Last year, Ellie and I initiated a grassroots group, the Upstate Locavores, to explore these issues further. Initially serving as an informal source of information about where to obtain locally-grown produce, the group has now become more formalized with a project website (www.UpstateLocavores.com), a listserv comprised of more than 100 individuals, and the initiation of grant-writing efforts. We have sponsored three local food potlucks, were involved in Clemson Farm Aid (an effort to preserve the campus organic garden and community-supported agriculture), and have shared information at a variety of events.

We hope that you can attend some or all of the following upcoming events:

GARDEN FEST: Mark your calendar for Saturday, April 18th from 10 a.m. to 1 p.m. for "GARDEN FEST: Building Community, Growing Vegetables," co-sponsored by the SC Botanical Garden, Clemson University Sustainable Agriculture, the CAT Bus system, the Upstate Locavores, and the Clemson University Home and Garden Information Center. GARDEN FEST will be held

SC Botanical Garden in the Discovery House parking lot, and will be geared toward the beginning gardener or the gardener who wants to update skills. Experiential displays will provide simple, hands on demonstrations and information on every aspect of gardening: planting, harvesting, watering, soil preparation, container gardening, mulching, and much more. Heirloom vegetable transplants will be available. GARDEN FEST is based on the "Victory Garden" concept: growing food at home to protect our local food supply; enjoying healthy in-season food that does not need to be transported 1500 miles (the average distance traveled by grocery store food); and building community by sharing the bounty, gardening together in neighborhoods, and providing food for others. Special CAT bus routes will wind from Littlejohn Community Center to Clemson Community Care to the gardens and back. For more information about GARDEN FEST, contact Lisa Wagner of the SC Botanical Garden (656-3405; lwagner@clemson.edu).

EARTHBOX PROJECT: Would you like to provide families who are facing difficult economic times with the chance to start gardening and growing some of their own food? Many local organizations and churches are joining together to make that happen! Nonprofit agencies will select the families and distribute the kits in mid-April. Each family will also be paired with a "garden mentor" who will provide informal gardening advice to his or her partner family. You can sponsor a complete gardening kit, called EarthBox, for \$60.00. Please email Susie Smith at susiebsmith@bellsouth.net if you want to help with this project or send a check marked "For EarthBox Project" to Susie at Peace Congregational Church, PO BOX 470. Clemson 29633. If you wish to help in other ways by sharing your gardening skills, teaching some classes, or joining our committee, speak with Susie Smith, Ellie Taylor or Catherine Mobley.

UPSTATE LOCAVORES POTLUCK: Join us on Thursday, May 21, as we meet to "break bread" together and talk about the "next steps" for our group. Please bring a dish to share; the dish should be prepared with at least one local ingredient. (Part of the fun of the event is when people share their stories about the food they have prepared for the dinner.) The event will begin at 6:30 p.m. and will be held at the Unitarian

(Continued on page next page)

Green Sanctuary *article continued*

Universalist Fellowship on Pendleton Road. Please stay tuned for further details (through our website)!

We would appreciate your publicizing these events to your family and friends. If you would like a flyer to distribute (e.g., to business groups, community groups, schools, etc.), just send us an e-mail and we'll send a flyer your way.

And, we invite you to join us in our efforts to promote local foods. If you would like to join our listserv, e-mail Catherine Mobley (camoble@clemson.edu) or Ellie Taylor (elptyl@bellsouth.net).

Submitted by Catherine Mobley & Ellie Taylor

Outreach News

Kathryn Smith

The Stewardship Committee has asked me to focus on Outreach in this month's article, as it is one of the programs funded by donations to UUFC. As the new chair of Outreach, I've learned it encompasses a huge number of services, both inside and outside the church. Here are a few recent examples:

The service on Ethical Eating on March 22 and the Food for Thought discussion luncheon that followed were both part of the Outreach Committee's work. Committee members Holley Ulbrich and Catherine Mobley, along with Ellie Taylor, were the most heavily involved.

On March 9, we hosted nine University of Florida volunteers who were in Clemson over spring break working on a Habitat for Humanity house. Outreach member Pat Zungoli received the initial contact from the coordinator at Clemson. Thanks to the many folks who donated so we could buy pizza for these young people, and thanks to Cynthia Prescott for being such a gracious hostess.

On the fourth Sunday of each month, Outreach names a local charity to receive non-pledge donations in the offering baskets. In February the charity was the Clemson Child Development Center, and \$705 was collected.

On the first Sunday of each month, members of UUFC are asked to bring canned goods and other

non-perishable items to church, and Outreach member Carol Ward takes them to Clemson Community Care. In March she delivered over 71 pounds of food. (The next food collection Sunday is April 5, and you are also asked to bring food to the Easter breakfast on April 12. Our children will then "hunt" the canned goods instead of hunting Easter eggs!) Our congregation is small, but we have big hearts. The work of the Outreach Committee doesn't even include the many things UUFC members do as individuals. Do you know of a community need that is not being met, or a charity that could be the focus of a Fourth Sunday offering? Please see me if you think it might be a project for Outreach.

Speaking of Stewardship, donations in February ran just short of what was expected. If you break the \$138,555 total pledge into 12 monthly pieces, we would expect to collect \$11,546 per month. February's collections totaled \$11,445. Because several people paid all or part of their pledges at the beginning of the year, we're actually ahead of budget. Thank you so much for keeping your pledge up to date in these tough economic times!

More Outreach

Clemson Area Congregations in Touch is sponsoring its annual lay academy on Monday, April 20th 7-9 p.m. at First Baptist Church in Clemson. The topic is Ethics, Religion, and End-of-Life Issues. Our speakers are Rev. Dr. George West, head of chaplaincy services at AnMed, and Dr. Patricia Smart, Professor of Nursing at Clemson University. Holley Ulbrich is the moderator. Drs. West and Smart will share some of their clinical experiences in dealing with end of life issues and the participants will be given some ethics cases to discuss and determine what decisions they might make based on their personal and religious values and the teachings of their faith tradition.

Submitted by Holley Ulbrich

COUNCIL OF COMMITTEE CHAIRS-2009

Cindy Lee	Board Representative & Chair of Council
Building/Grounds	Allen Guest & Meg Williamson
Communication	Jan Lay
Hospitality/Holidays	Anita Stutzman
Membership	Karen Hiebel
Outreach	Kathryn Smith
Religious Education	Mark Mellott
Stewardship	Bob Snelsire
Ways and Means	John Kenelly
Worship	Holley Ulbrich

Summary of the March 11 Board of Directors' Meeting Highlights of the meeting

The Minister's Discretionary Fund (MDF) is low, as is the building supply account. Other finances generally OK. Non-pledged donations are lower than usual.

Inventory of the safety deposit box is underway and should be completed within the next month or so.

Finance committee, under the direction of Sandra Sanderson, has worked out a policy for the MDF.

Director of Religious Education contract will be reviewed this month. Robin Kimbrough-Melton will work with the personnel committee so that contracts can be more in line with the UUA guidelines and completed prior to the end of the year.

Personnel wages were discussed and the decision made to revisit in June before making any changes.

COSMOS: Rev. Prescott's contract has been amended to and the compensation package attached. (Ed. Note: **in secretary's notes for Board, not attached here.*)

A Congregational meeting is scheduled for May 3. Agenda to be determined at the April board meeting.

Carolyn Turner, Secretary

MONTHLY EVENTS & GROUPS

Covenant Groups: We have 6 on-going Covenant Groups. Please inquire at the office if you are interested.

UUFC Board, Committee, and other Business Meetings

Outreach Committee, 1st Thursday, 6:00 pm,
Library

Membership Committee, 4th Wednesday, 5:30pm

RE Committee Meeting, 3rd Tuesday, Noon,
Founders House

Board Meeting, 2nd Wednesday, 7:00 pm,
Social Room

Finance Committee, 1st Wednesday 6:30 pm,
Library

Green Sanctuary, 1st Tuesday, 5:00 pm,
Founders House

COSMOS, 3rd Thursday, 4:45 pm,
Founders House

Staff Meeting, 3rd Wednesday, Founders House

Miscellaneous Monthly Events: Clemson Community Care Food Collection,

1st Sunday, Main Building

Trading Post, 2nd Sunday, Main Building

Benevolence Offertory, 4th Sunday, Sanctuary

UUFC Women's Salad Supper Group,

4th Wednesday, 6:30 pm, Founders House

The Nekkid Muse: A UUFC Coffeehouse

2nd Friday of each month, 6:00 pm, Pot Luck

dinner, then Nekkid Muse Coffeehouse, 7:00pm.

Novel Circle, 1st Wednesday, 7:30 pm,

Founders House

Choir Practice, Every other Sunday, 10 am -
Front classroom in Main building

NEW: Literary League, For people who love words. 3rd Tuesday (call Bonnie Worthen for details. 646-3319) Bring an appetite to become real wordsmiths!)

Fourth Sunday Food for Thought: Pot luck lunch & discussion on UUA-relevant topic.

NOVEL CIRCLE meets the first Wednesday of every month at 7:30 pm at Founders House. See summaries below for April and May!

April 1, 2009. *Infidel* by Ayaan Hirsi Ali. Raised in a strict Muslim family, Hirsi Ali survived civil war, female mutilation, brutal beatings, adolescence as a devout believer during the rise of the Muslim Brotherhood, and life in four troubled, unstable countries largely ruled by despots. In her early twenties, she escaped from a forced marriage and sought asylum in the Netherlands, where she earned a college degree in political science and fought for the rights of Muslim immigrant women and the reform of Islam as a member of Parliament. Ultimately a celebration of triumph over adversity, Hirsi Ali's true story tells how a bright little girl evolved out of dutiful obedience to become an outspoken, pioneering freedom fighter. As Western governments struggle to balance democratic ideals with religious pressures, no story could be timelier or more significant. 384 pages, Free Press, 2008.

May 6, 2009. *People of the Book* by Geraldine Brooks. One of the earliest Jewish religious volumes to be illuminated, the Sarajevo Haggadah survived centuries thanks to people of all faiths who risked their lives to safeguard it. Geraldine Brooks has turned the intriguing but sparsely detailed history of this precious volume into an emotionally rich, thrilling fictionalization. In the hands of Hanna Heath, an impassioned rare-book expert restoring the manuscript in 1996 Sarajevo, it yields clues to its guardians and whereabouts. While readers experience crucial moments in the book's history through a series of fascinating, fleshed-out short stories, Hanna pursues its secrets scientifically, and finds that some interests will still risk everything to protect this treasure. A complex love story, thrilling mystery, vivid history lesson, and celebration of the enduring power of ideas. 372 pages, Penguin Books, 2008.

We will be on summer break on June 3, 2009, so there will be no June meeting. We'll get back together on July 1st for a cookout and book discussion.

- Submitted by Gail Brownlee -

Holidays & Hospitality Report

UUFC Refrigerator



In an effort to keep our refrigerator uncluttered with items that sit beyond their expiration date, the H&H Committee requests your help.

1. Please take your leftovers home. Folks who bring salad dressings and condiments to potluck affairs should bring the unused portions home.
2. Please do not store liter sized bottles with just an inch or two of liquid. Remove the caps, rinse the bottles and place them in the recycling container.
3. Items put in the refrigerator for short term use should be labeled with the person's name, purpose for which they are to be used, and date by which they will be used. Example: "Jane Doe for R.E. Use by 3/3."

H&H will regularly clean the refrigerator and toss out items that are not labeled and those that are beyond the "use by" date.

Thanks in advance for your help in keeping us all healthy.

Anita Stutzman

UUFC Board of Directors

President	Martha Alexander
President-Elect	Robin Kimbrough-Melton
Past President	Karel Keel
Secretary	Carolyn Turner
Treasurer	Christine Grewcock
Finance	Sandra Sanderson
Council Chair*	Cindy Lee
At Large	Eleanore Richardson
Ex Officio	Rev. Cynthia Prescott
Minister, Rev. Cynthia Prescott	654-8832
Director of RE, Meg MacArthur	639-2847
Administrator, Julie Craig	654-5959
Choir Director, Elaine Fredendall	654-3834
Pianist, Shayna Hollander	
Main Building Phone:	654-5980
Email: uufcadm@yahoo.com	
Receiving Treasurer: Jeannine Varenhorst	
UUFC Webmaster: Steve Bynum	
UUFC Website: www.uufc.org	
Newsletter Editor: Heidi Campbell	653-7835

Newsletter Deadline for the May issue is April 20th. Please send articles, letters, announcements and other submissions to heidisong@nctv.com.

Want to know what's going on at UUFC between newsletters? Subscribe to the electronic announcement list and you'll receive one or two messages each week keeping you up to date on fellowship activities and people. To subscribe, send an email to uufcadm@yahoo.com and ask to be signed up or call the Fellowship office at 654-5959.

UUFC WORLD Newsletter
Unitarian Universalist Fellowship of Clemson
230 Pendleton Road
Clemson, SC 29631



Return Service Requested

We affirm and promote:

- the inherent dignity and worth of all people
- justice, equity and compassion in human relations
- a free and responsible search for truth and meaning
- the right of conscience and use of the democratic process
- a goal of world community with peace, liberty and justice for all
- acceptance of one another and encouragement of spiritual growth
- respect for the interdependent web of existence of which we are a part.